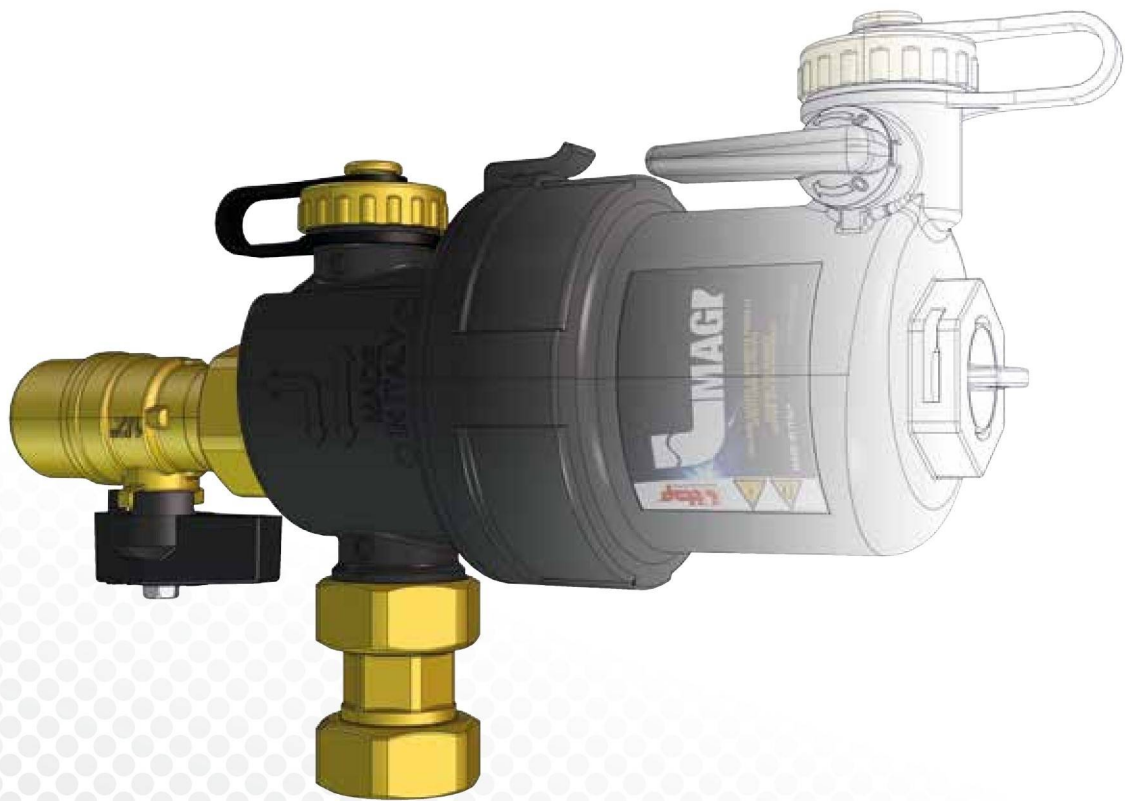




TECHNICAL CATALOGUE

MAGR magnetic compact dirt separator

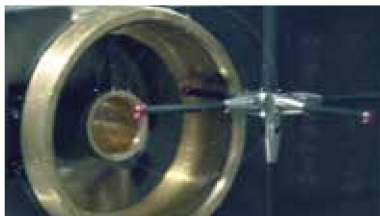
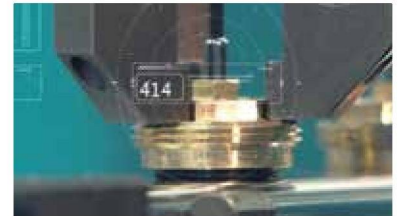


> THE COMPANY

ITAP SpA, founded in Lumezzane (Brescia) in 1972, is currently one of the leading production companies in Italy of **valves, fittings and distribution manifolds** for plumbing and heating systems.

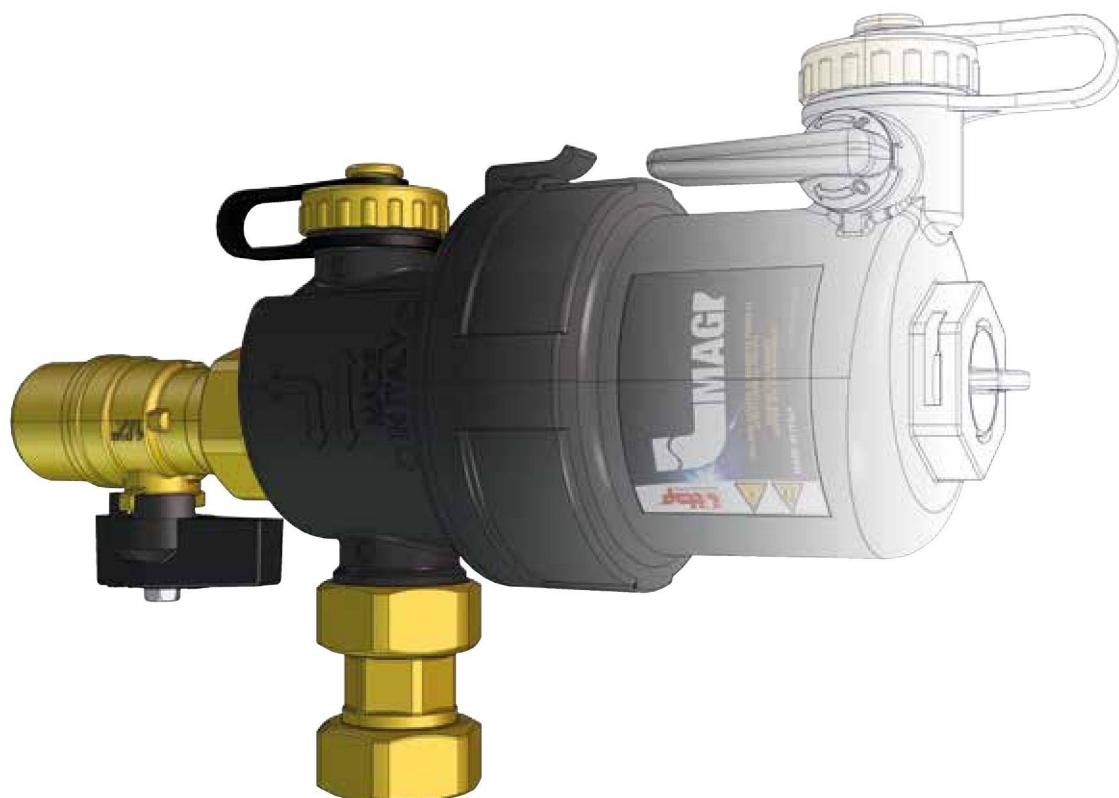
Thanks to fully automated production processes, with 85 tooling machines and 55 assembly lines, we are able to produce 400.000 pieces per day.

Our innate pursuit for innovation and observance of technical regulations is supported by the company certification ISO 9001:2015. The company has always considered its focus on quality as the main tool to obtain significant business results: today ITAP SpA is proud to offer products bearing the approval of numerous international certifying bodies.



> ITAP products have obtained approvals by more than 30 certification bodies from all over the world.





> **GENERAL NOTES:**

Magnetic compact dirt separator, suitable for under-boiler installations.

Optimized with:

- large debris collection capacity
- suitable for horizontal and vertical installation
- best flow filtration
- easy-to-remove magnet
- integrated drain valve

> 188 Magnetic compact dirt separator

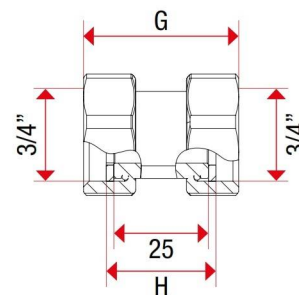
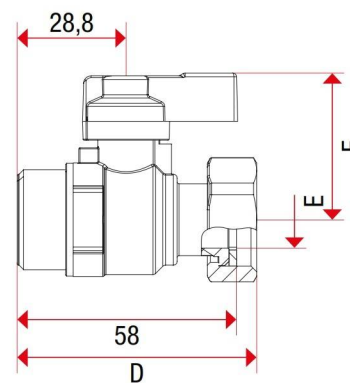
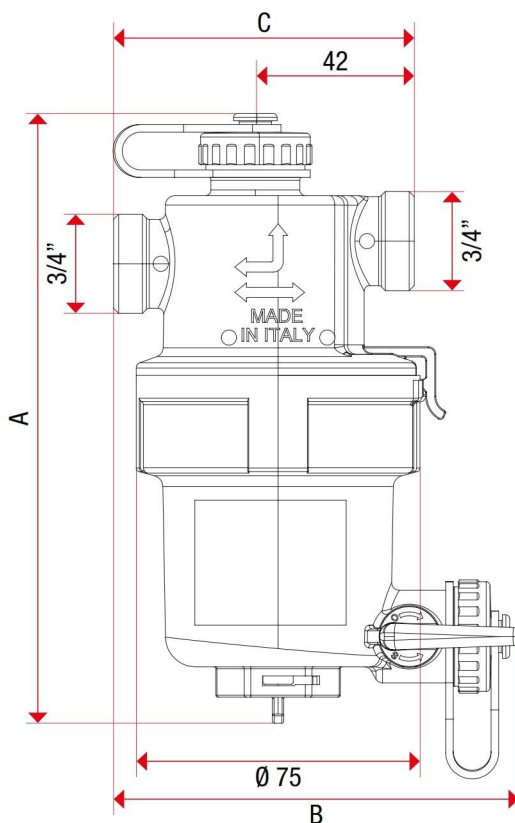
SIZE	PRESSURE	CODE	PACKING
3/4" x 3/4"	3bar/43,5psi	1880034	1



> TECHNICAL SPECIFICATIONS

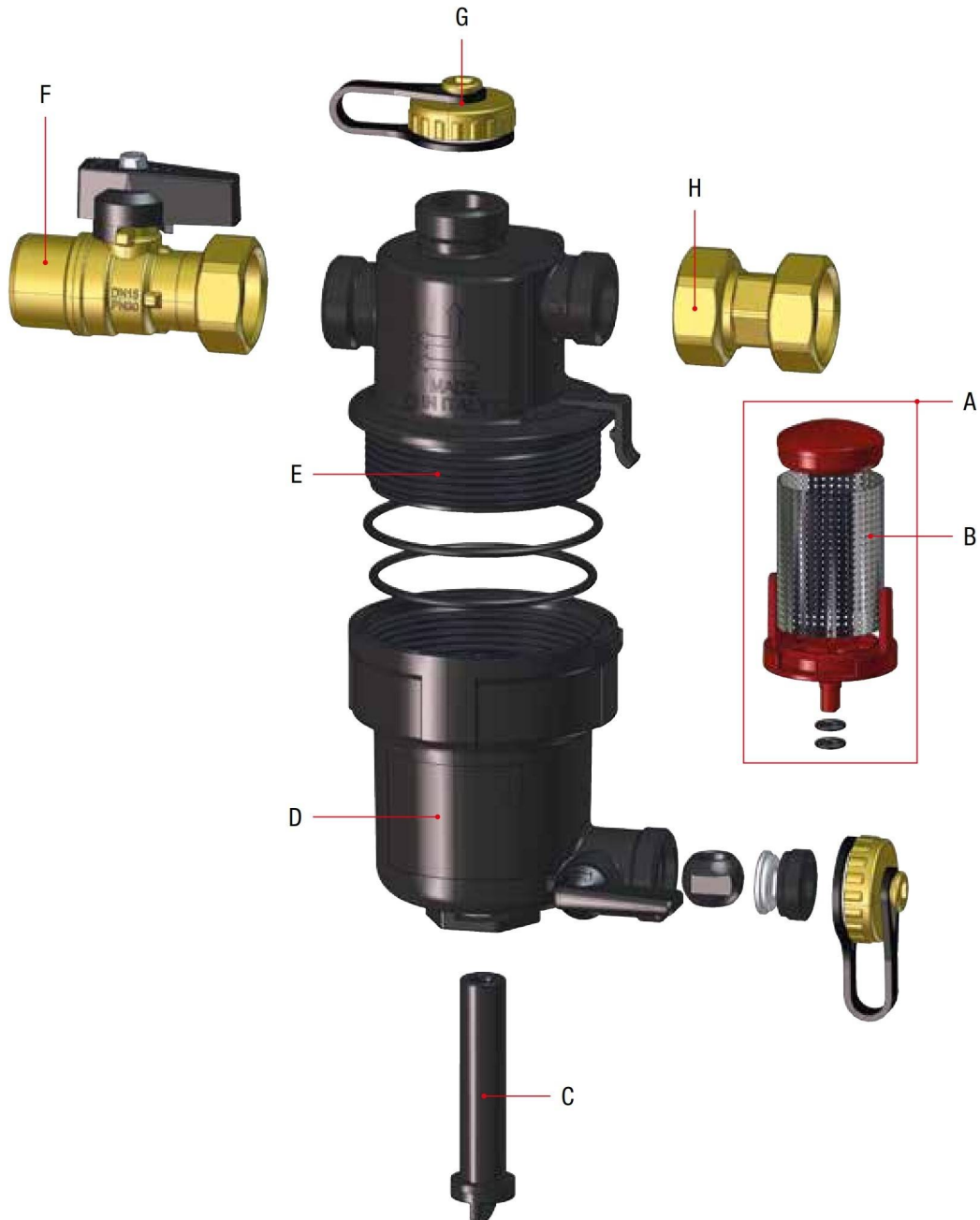
Body and filter chamber in polymer
 Cartridge in stainless steel AISI 304
 Stainless steel cartridge filtration degree: 800µm
 Magnet in neodymium: 12000 G
 Suitable for: water or water + glycol 50% max
 Maximum working pressure: 3 bar
 Max flow rate: 1,5 m³/h
 Working temperature: 0 - 90 °C
 Threads ISO 228: 3/4" M x 3/4" F

> OVERALL DIMENSIONS



	3/4"
A	161
B	107,2
C	79,5
D	63,3
E	15
F	38,75
G	41
H	29

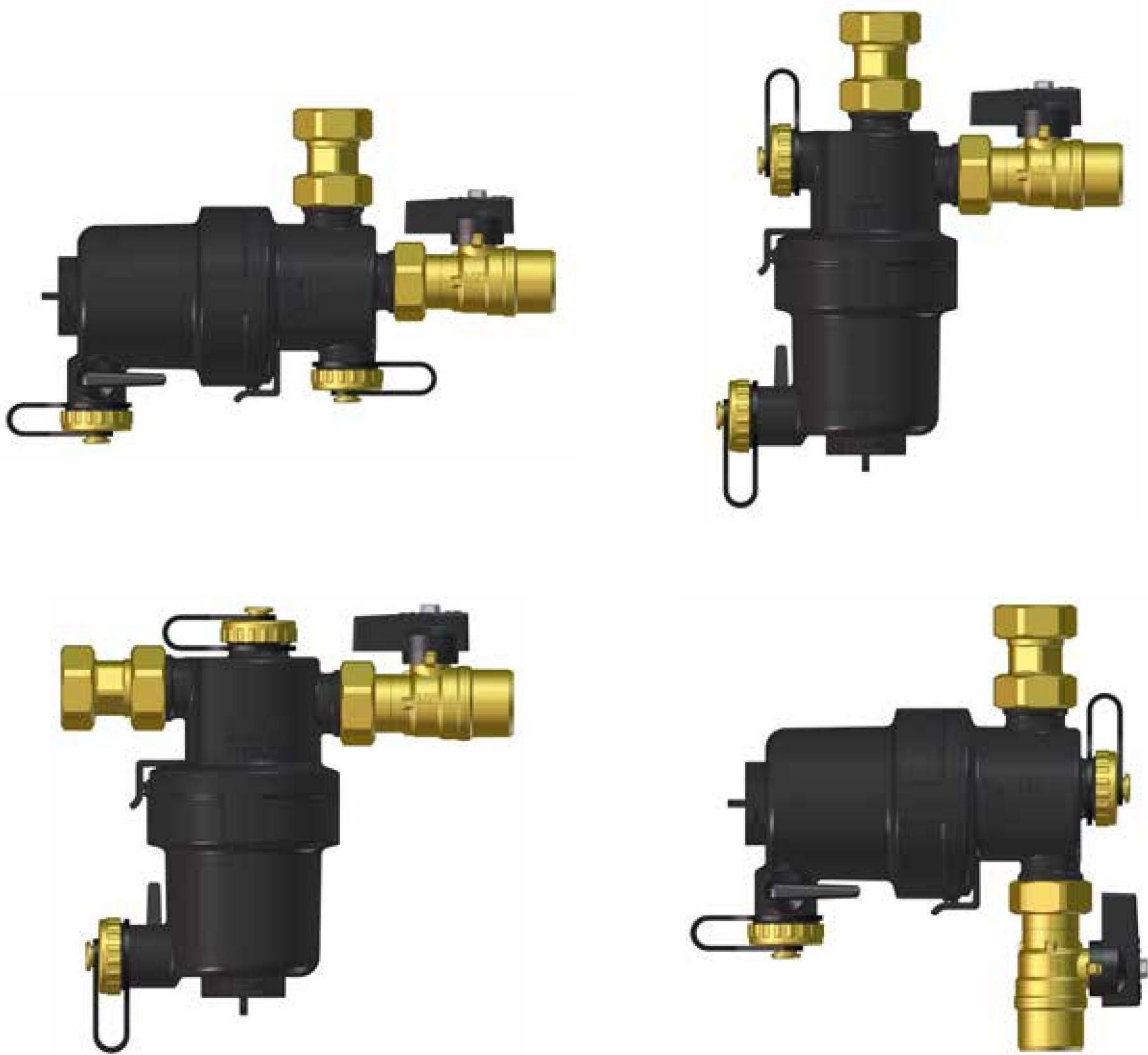
> DESCRIPTION



POS.	DESCRIPTION
A	Filter insert
B	Stainless steel mesh
C	Magnet
D	Filter chamber
E	Body with threaded fittings with double o-rings
F	Shut-off valve (heating system connection)
G	Cap
H	Swivel fitting (boiler connection)

> MOUNTING POSITIONS

iMAG can be installed horizontally or vertically, due to its T fitting and special design. It is the only dirt separator allowing perfect filtration and cleaning in all positions and it is particularly easy to use.



> INSTALLATION INSTRUCTIONS

- This device should be installed on the return boiler's piping.
- Use a 29 mm wrench to loosen the filter chamber when required for maintenance.
- Perform routine cleaning one month after initial installation. Then, perform routine cleaning operations twice a year when the heating system is in use. In order to do so, remove the magnet by turning it 90° towards the opening as shown by the arrow (clockwise), open the integrated drain valve for a few seconds so that any impurities in the large filter chamber will drain out.

> INSPECTION, CLEANING AND MAINTENANCE



IMPORTANT. Before you inspect, clean or service the device, shut the generator off, close the shut-off valves upline of the dirt separator and wait for all parts to cool down.

Clean the device as follows:

- 1 Close the shut-off valve upline of the dirt separator.
- 2 Extract the magnet by turning it 90° clockwise, allowing any debris to detach and deposit on the base of the chamber.
- 3 Undo the cap covering the drain valve.
- 4 Connect a drain hose to the drain valve or place a vessel under it.
- 5 Open the drain valve by turning its lever.
- 6 Wait a few seconds, then slightly open the shut-off valve upline of the device to allow the washing water to flow through it and drive out the debris.
- 7 Once you have clean the device, close the upline shut-off valve and the drain valve, remove the hose or vessel, and restore the bottom cap.
- 8 Restore the magnetic insert to its seat by turning it 90° counter clockwise and re-open the upline valve.

The device should be cleaned at the following intervals:

- 1 month after initial installation;
- twice a year thereafter during the winter season.

However, the cleaning interval must be suited to the system specifications.



1 Closing the shut-off valve.



2 Removing the magnet (turn it 90° clockwise)



3-5 Opening the drain valve.



6 After a few seconds, open the upline shut-off valve slightly to wash out the interior of the unit

To inspect the dirt separator completely or clean/replace the filter cartridge, you can remove the filter chamber completely with a normal CH 29 wrench. Lubricate the o-rings with EPDM compatible grease.

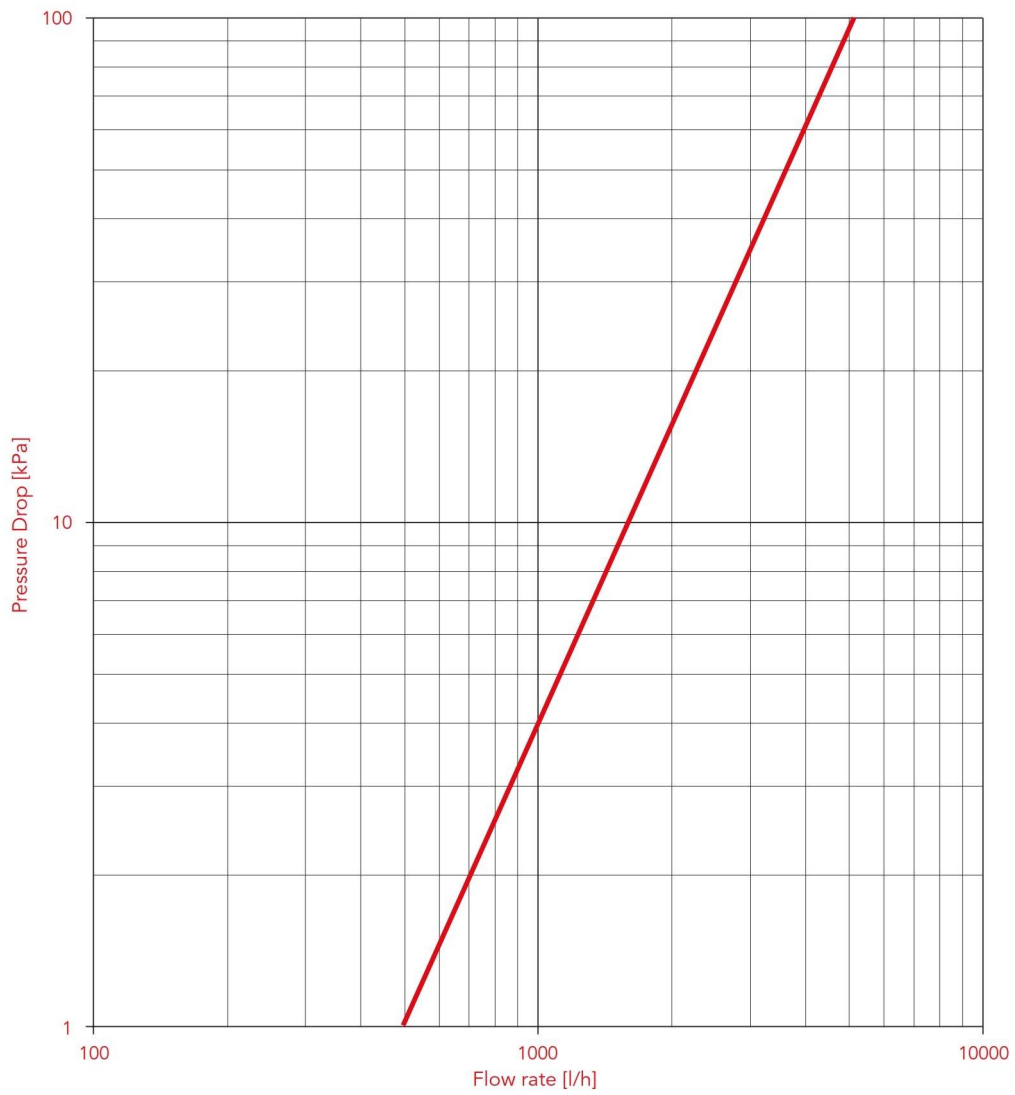


N.B.: ALWAYS REMOVE THE MAGNET BEFORE YOU REMOVE OR RESTORE THE COMPONENTS



> PRESSURE DROP DIAGRAM

Diagram valid for both vertical and horizontal installations.



	3/4"
Kv	5,2

> WHY iMAG?

Dirt separators are by now common components in European installations; **ITAP** introduces today iMAG, after accurate market studies and projects that guarantee the best features:

- ⦿ **right dimension for installations in small spaces, perfect for under-boiler;**
- ⦿ **stainless steel strainer (800µm), perfect to stop the larger impurities;**
- ⦿ **suitable for vertical and horizontal installations, with the best filtration guaranteed;**
- ⦿ **integrated drain valve for an easy and fast maintenance;**
- ⦿ **strong magnet (12.000G) with large contact surface to stop every iron particle and easy-to remove to avoid disassembling before cleaning;**
- ⦿ **large debris collection capacity to guarantee the water slowing in order to stop all impurities.**

